

ANTEJARDIN

ANDEN

—PARAMENTO


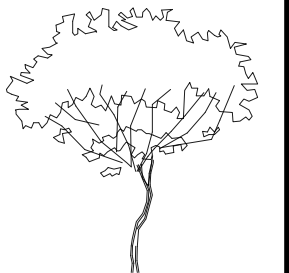


ARQUITECTURA

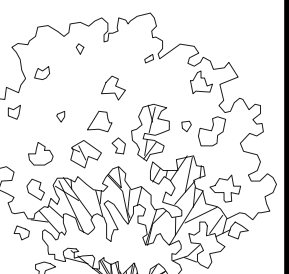
2170295

CDI EN EL BARRIO  
MOLINOS,  
PIEDECUESTA

A pie chart with a central label 'ARB-1'. The chart is divided into several segments of varying sizes, representing different categories. The segments are separated by thin white lines. The largest segment is at the top, followed by a medium segment on the right, and several smaller segments at the bottom and left.



x  
ARB-2



ARQ. JORGE  
ALBERTO NARVAEZ

PLANTA CUBIERTAS

FACHADA SUR

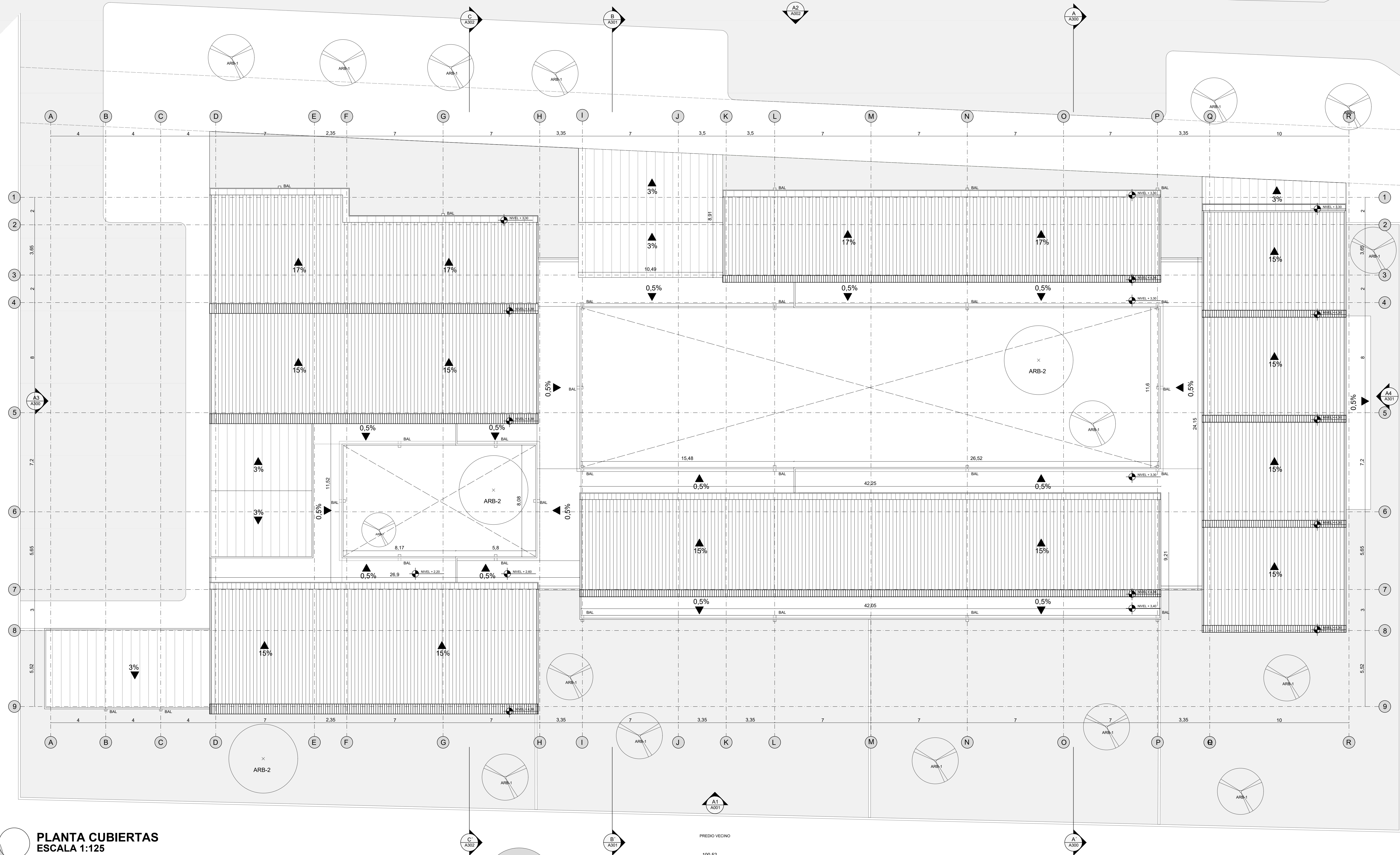
1:125

02/11/22

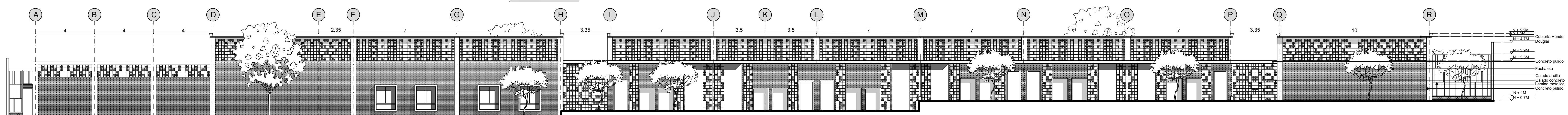
A-001 DE

6

11



**PLANTA CUBIERTAS**  
**ESCALA 1:125**



**FACHADA SUR**  
**ESCALA 1:125**

- |  |                 |
|--|-----------------|
| $\frac{N}{\sqrt{A}} = 5,2 \text{ MPa}$ |                 |
| $\frac{N}{\sqrt{A}} = 5,9 \text{ MPa}$ | Cubierta Hunder |
| $\frac{N}{\sqrt{A}} = 4,7 \text{ MPa}$ | Douglas         |
| $\frac{N}{\sqrt{A}} = 3,9 \text{ MPa}$ |                 |
| $\frac{N}{\sqrt{A}} = 3,5 \text{ MPa}$ | Concreto pulido |
|  | Fachuela        |
|  | Calado arcilla  |
|  | Calado concreto |
|  | Lamina metálica |
|  | Concreto pulido |
| $\frac{N}{\sqrt{A}} = 1 \text{ MPa}$   |                 |
| $\frac{N}{\sqrt{A}} = 0,7 \text{ MPa}$ |                 |